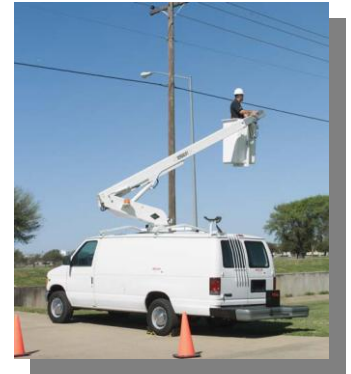
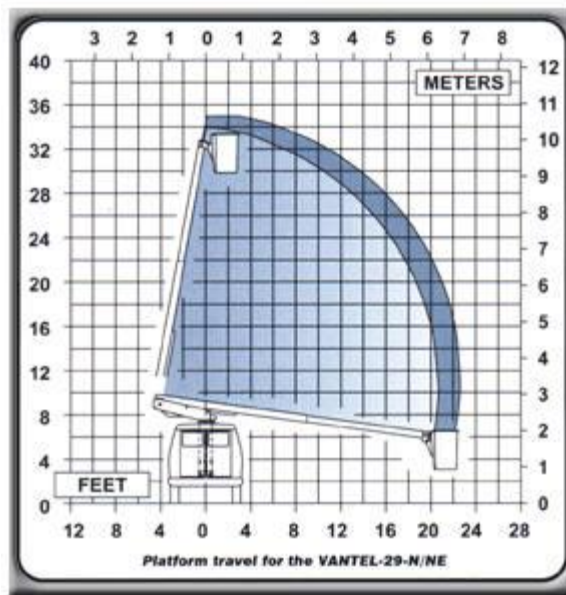


Vantel 29 Series



<u>General specifications</u>	<u>Vantel-29-N</u>	<u>Vantel-29-NE</u>	<u>Vantel-29-I</u>	<u>Vantel-29-EI</u>	<u>Vantel-29-IH</u>	<u>Vantel-29-EIH</u>
Based on 34 in. Frame Height						
Horizontal reach	20' 8"	22' 7"	21' 8"	23' 5"	20' 11"	22' 8"
Platform capacity	350 lbs.	350 lbs.	350 lbs.	350 lbs.	350 lbs.	350 lbs.
Standard rated platform capacity	300 lbs.	300 lbs.	300 lbs.	300 lbs.	300 lbs.	300 lbs.
Controls	Electric/Hydraulic	Electric/Hydraulic	Electric/Hydraulic	Electric/Hydraulic	Full Hydraulic	Full Hydraulic
Platform leveling	Gravity	Hydraulic	Gravity	Hydraulic	Hydraulic	Hydraulic



<u>Van mount pedestal with riser</u>						
Platform height	28' 11"	29' 9"	29' 11"	30' 7"	28' 8"	28' 3"
Working height	33' 11"	34' 9"	34' 11"	35' 7"	33' 8"	33' 3"
Stowed travel height	9' 9"	9' 9"	9' 9"	9' 9"	9' 8"	9' 8"
Weight of lift	1,510 lbs.	1,530 lbs.	1,580 lbs.	1,600 lbs.	1,630 lbs.	1,650 lbs.

<u>Hydraulic system</u>						
Operating pressure	2,000 psi	2,000 psi	2,000 psi	2,000 psi	2,000 psi	2,000 psi
Flow Rate	2 gpm	2 gpm	2 gpm	2 gpm	3 gpm	3 gpm
Filtration	10 micron return	10 micron return	10 micron return	10 micron return	10 micron return	10 micron return
System type	Open center	Open center	Open center	Open center	Open center	Open center
Power source option	Belt drive	Belt drive	Belt drive	Belt drive	Belt drive	Belt drive
Power source option	Generator	Generator	Generator	Generator	Generator	Generator
Power source option	DC drive	DC drive	DC drive	DC drive		

<u>Boom action:</u>						
Outer boom travel	-14° to +74°	-14° to +74°	-8° to +80°	-8° to +80°	-14° to +74°	-14° to +74°
Inner boom extension	116"	116"	116"	116"	116"	116"
Rotation	360° non-continuous	360° non-continuous	360° non-continuous	360° non-continuous	360° non-continuous	360° non-continuous
Outer boom insulation gap	N/A	N/A	42"	42"	42"	42"

O.G. Hughes & Sons, Inc. 4816 Rutledge Pike Knoxville, TN 37914
 (Phone) 865-524-7525 (Fax) 865-637-1135 (Toll Free) 800-949-8864

Features

N/NE controls: Electric/hydraulic controls at platform are recessed into the inner boom. Positive override at lower station. A spring loaded master control switch is provided. Engine stop and start is one dual action switch. Optional GFCI receptacle (120 V power), on non-insulated units, and optional pneumatic circuits (1 or 2) are located at the end of the boom. Remote lower controls are standard on all models.

Mechanical system: Rotation is 360° non-continuous, activated by hydraulically driven worm and spur gears with a shear-ball rotation bearing. Turret top plate and mast plate are machined to provide a flat surface to support the rotation bearing. Non-lube bearings are used at all points of movement.

Hydraulic system: The open center hydraulic system operates at 2,000 PSI (141 kg/cm²) at 2 or 3 GPM (8 or 12 LPM). Sight gauges are furnished for checking fluid levels.

Platform: The standard fiberglass platform is 24" X 24" X 42" (.61 m X .61 m X 1.07 m). Non-insulated models have a step through opening for easy access. Walk-in and splicing platforms are also available.

Options: Following are some options available; van mount pedestals and risers, taller pedestals, hydraulic leveling (on 29-I and N), continuous rotation, emergency power, two-speed manual throttle, pneumatic circuits at the platform, and several platform and capacity variations.

